

But the notion of a flat Earth didn't die in Ancient Greece. The theory survived, and today, the re-established Flat Earth Society remains an international organization dedicated to the promotion and development of Flat Earth Theory, the archival and study of historical flat Earth literature, and a haven for free thinkers and the intellectual exchange of ideas.

You can connect with the Flat Earth Society at [www.tfes.org](http://www.tfes.org).

The Flat Earth Society Samuel Shenton, above, founded the International Flat Earth Research Society in 1956. Today the modern Flat Earth Society continues his work developing and promoting Flat Earth Theory. Learn more about the society at [www.tfes.org](http://www.tfes.org)





The Flat Earth Society is a place for free thinkers and the intellectual exchange of ideas. If you're curious about the society or our ideas, we would love to invite you to join the discussion at the official Flat Earth Society website and forum.

*In Veritate Victoria!*

[www.TFES.org](http://www.TFES.org)

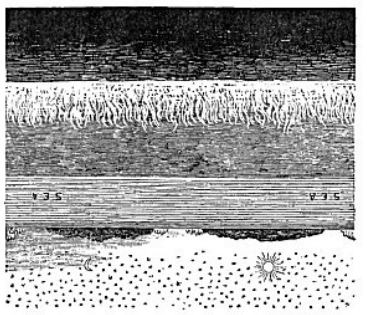
CC BY Except where otherwise noted, this work is licensed under <http://creativecommons.org/licenses/by/3.0/>

# DO PEOPLE REALLY THINK THE EARTH IS FLAT?

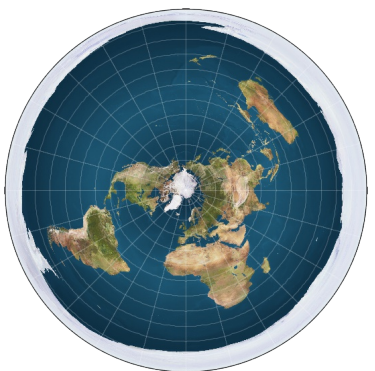


(yes.)

**Zetetic Astronomy: Earth Not a Globe**  
 First published in 1864, Samuel Birley Rowbotham's book *Zetetic Astronomy: Earth Not a Globe* is an experimental inquiry into the earth's shape, proving it a plane.



**The Flat Earth**  
 As seen in the diagram above, the earth is in the form of a disk with the North Pole in the center and Antarctica as a wall around the edge.



**What is the Flat Earth Society?**  
 The Flat Earth Society was founded in 1956 by Samuel Shenton, but its roots go back much further. For centuries our ancestors knew the Earth was flat, by their powers of observation alone, but Ancient Greek philosophers, predominantly Aristotle, began to spread the idea that everything in the cosmos, including earth, were perfect spheres. Thus the modern myth of spherical earth was born.

**Is this a joke?**  
 In short, no. This is not a joke. The evidence for a flat earth is derived from many different facets of science and philosophy. The simplest is by relying on one's own senses to discern the true nature of the world around us. The world looks flat; the bottoms of clouds are flat; the sun follows a circular path; the surface of standing water is flat; these are all examples of your senses telling you that we do not live on a spherical world.